

Configuring SimDiff 4 for use with Tortoise SVN

Contents

General Information	2
Configuring SimDiff 4 with Tortoise SVN.....	2
Configuring SimDiff 4 as a Diff Tool	3
Configuring SimDiff 4 as a Merge Tool.....	3

General Information

TortoiseSVN can be configured to launch an external diff/merge tool when comparing versions or resolving merge conflicts. A single external tool can be configured for all files (not recommended for SimDiff 4), or tools can be configured to operate only on particular file types, based on file extension.

Note that if there is not a merge conflict, TortoiseSVN will not launch the external tool to merge the files. For example, if a model file was modified in a branch, but was not modified in the main branch, when the branch is merged to the main branch, SimDiff 4 is not invoked, as there is no merge conflict to resolve.

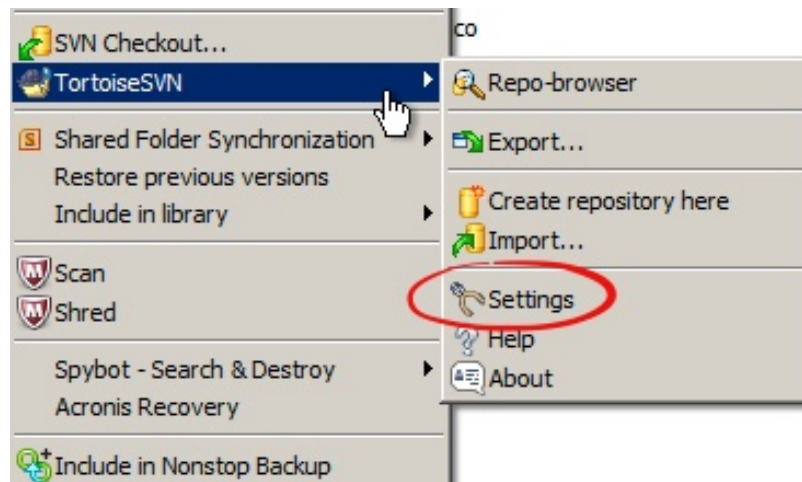
More information on merging and resolving conflicts in TortoiseSVN can be found in the TortoiseSVN documentation:

http://tortoisesvn.net/docs/release/TortoiseSVN_en/tsvn-dug-merge.html

http://tortoisesvn.net/docs/release/TortoiseSVN_en/tsvn-dug-conflicts.html

Configuring SimDiff 4 with Tortoise SVN

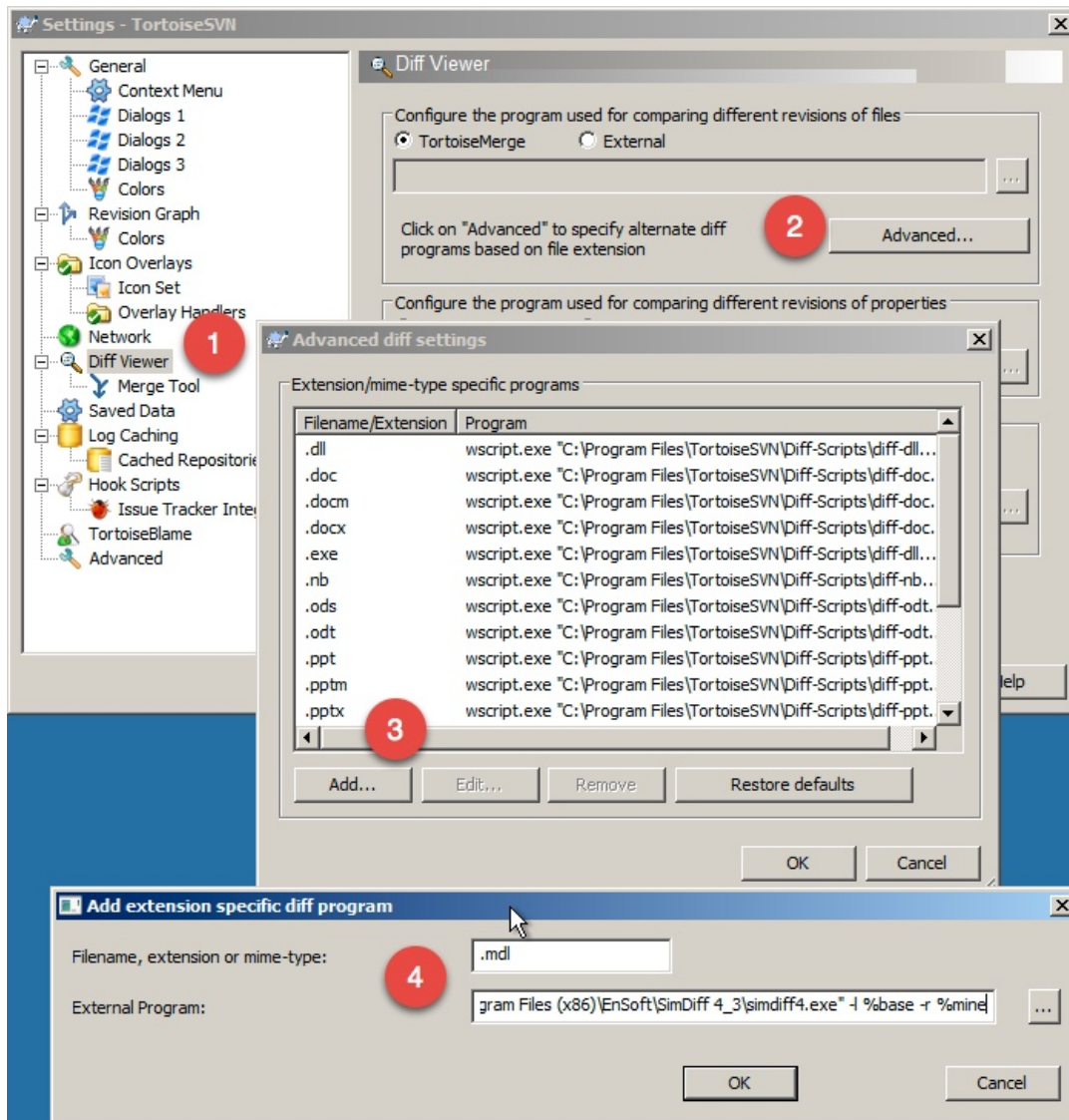
You can configure SimDiff 4 for Diff and/or Merge. A common step for the configuration is to open the TortoiseSVN Settings dialog (right-click in *Windows Explorer* > *TortoiseSVN* > *Settings*).



Configuring SimDiff 4 as a Diff Tool

1. In the sidebar tree, select *Diff Viewer* (for diff settings)
2. Click *Advanced...* to open the advanced settings
3. Edit the entry for extension *.mdl*, or add a new entry if it doesn't exist
4. Enter the command below for SimDiff 4 and press *OK* for all dialogs

```
"C:\Program Files\EnSoft\SimDiff 4\simdiff4.exe" -l %base -r %mine
```

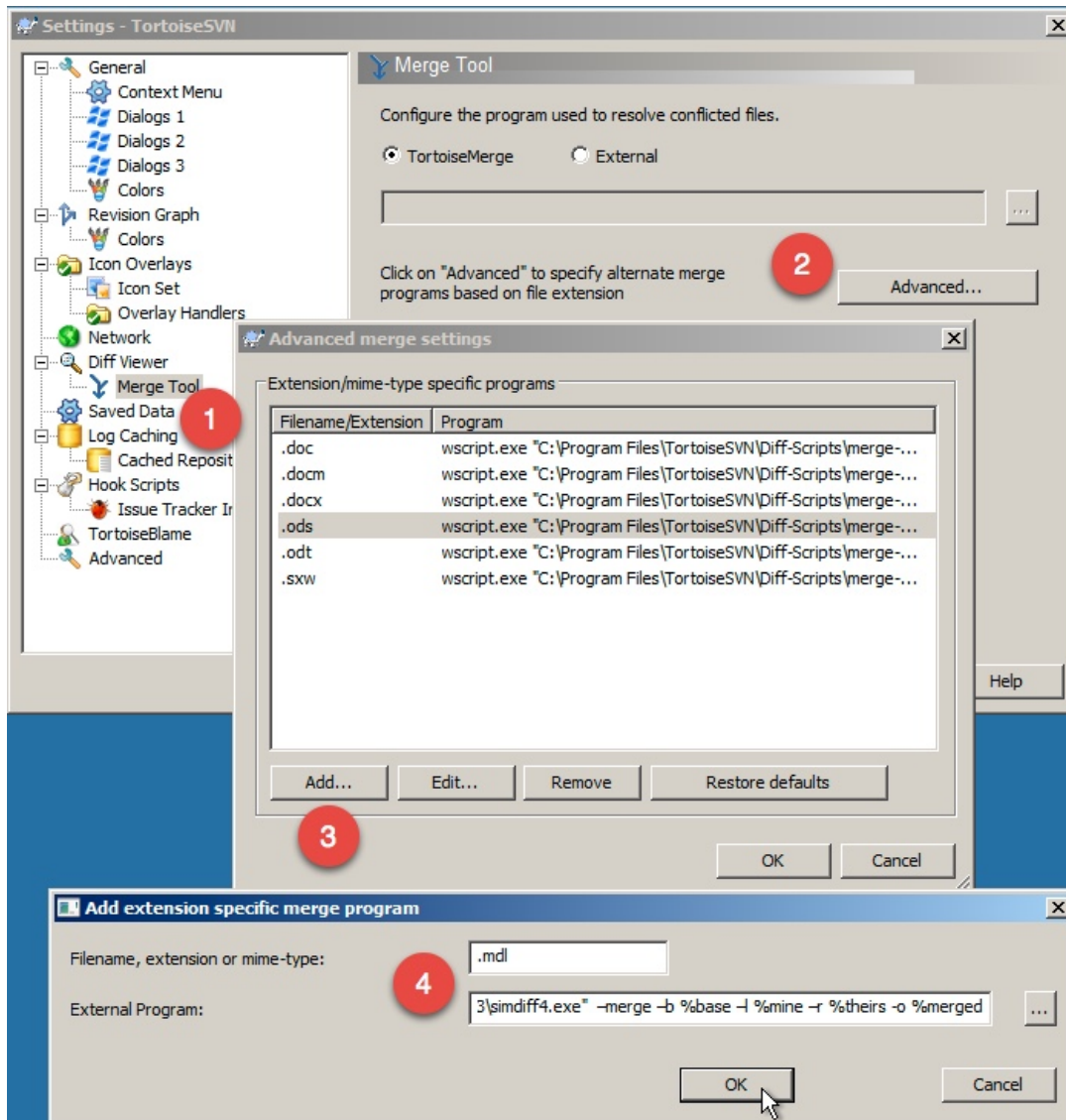


Configuring SimDiff 4 as a Merge Tool

1. In the sidebar tree, select *Diff Viewer* > *Merge Tool* (for merge settings)

2. Click *Advanced...* to open the advanced settings
3. Edit the entry for extension `.mdl`, or add a new entry if it doesn't exist
4. Enter the command below for SimDiff 4 and press *OK* for all dialogs

```
"C:\Program Files\EnSoft\SimDiff 4\simdiff4.exe" -merge -b %base -
l %mine -r %theirs -o %merged
```



Note - the above sections assume SimDiff 4 was installed to its default installation directory. Please make appropriate modifications to the command if it was installed elsewhere.

More information on configuring external tools with TortoiseSVN can be found here:

http://tortoisesvn.net/docs/release/TortoiseSVN_en/tsvn-dug-settings.html#tsvn-dug-settings-progs